

**VOL. EXEC. DIRECTOR**  
OUTSIDE LAISON ONLY; (HF1, SSO, STATE, CNTY CORPORATE, ETC)

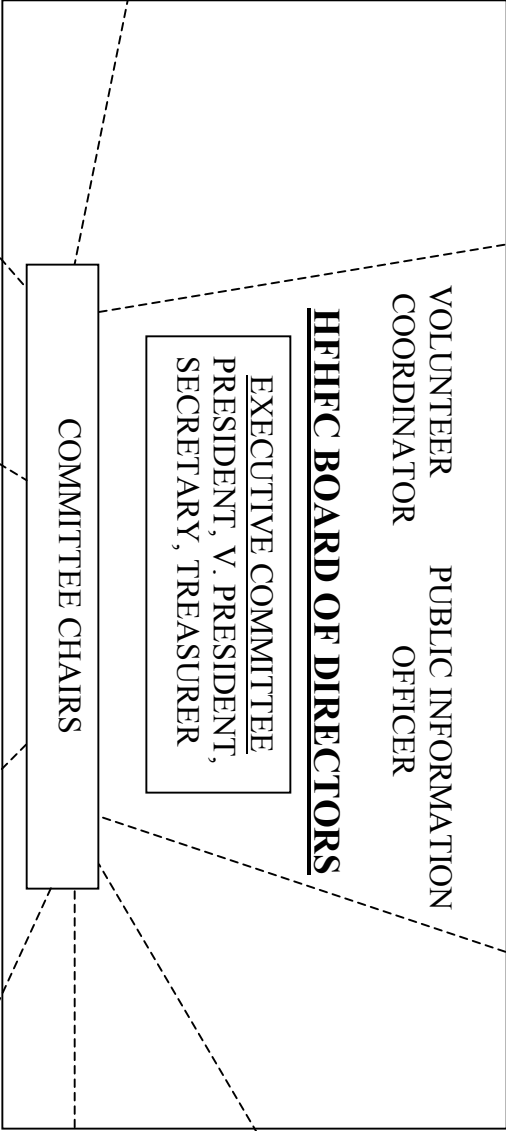
**FINANCIAL MGMT**  
AFFILIATE OPS PLAN, MORTGAGES, ESCROWS, BUDGET, FINANCIAL STATEMENTS, INSURANCE, BOOKKEEPING

**VOLUNTEER**  
PROVIDE, COORDINATE ALL VOLUNTEERS FOR ALL PROJECTS, INCL SPONSORSHIPS, ALLIANCES, GROUPS, SITE HOSTS

**PROFESSIONAL ADVISORY RESOURCES**  
LEGAL COUNSEL  
Fr. Cnty. REALTY BOARD  
PASTORAL GUIDANCE  
HFH International  
COUNTY COMMISSION

**ADVANCED ACTIVITIES**  
SSO, DISASTER RELIEF, FUTURE ALLIANCES, ADVOCACY

**SITE SELECTION**  
PROPERTY ACQUISITION, DISPOSAL, DEVELOPMENT, SURVEYING, APPLICABLE TO ALL TYPES OF AFFILIATE PROJECTS



**MKTING & DEVEL**  
AWARENESS ISSUES, FUND RAISING, AFFILIATE TRAINING, PUBLIC RELATIONS

**CHURCH RELATIONS**  
ELICIT SUPPORT, COOPERATION AS APPROPRIATE

**FAMILY SELECTION**  
IDENTIFY SUBSTANDARD NEEDS THROUGHOUT THE COUNTY, LOCATE, QUALIFY FAMILIES, ALLOCATE NEED

**CONSTRUCTION**  
DESIGN, CONSTRUCT ALL HOUSING PROJECTS, PROVIDE LDRSH, TOOLS, MATLS, EQUIPMENT, FLEET, FACILITIES

**FAMILY SUPPORT**  
PARTNERSHP AGREEMENTS, SWEAT EQUITY, TRAINING, HELP, FAMILY COMPATIBILITY WITH COMMUNITY